



GOVERNMENT OF NEPAL  
INVESTMENT BOARD NEPAL

## About IBN

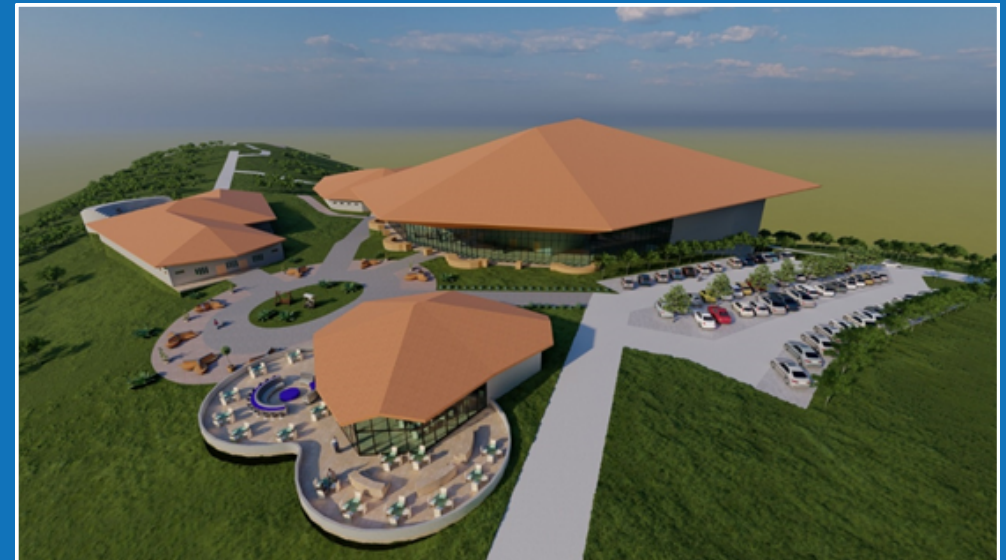
Investment Board Nepal is a high-powered agency chaired by Rt. Hon. Prime Minister established as a nodal agency for Public Private Partnership (PPP) and investment promotion in Nepal. Since its establishment, IBN has played an instrumental role in implementing transformative infrastructure projects fundamental to bolstering socio-economic development of the country. IBN has provided investment approvals – for both Public-Private-Partnership and direct private investment projects- with a total project cost of approximately USD 9.27 billion, of which IBN has been facilitating projects with total investment of approx. USD 3.26 billion. Being guided by the Long-term Vision (2043), the 15th Plan and other subsequent policies of the Government of Nepal; and international commitments such as Sustainable Development Goals, IBN has been developing credible and bankable projects to garner investment



### INVESTMENT BOARD NEPAL

Office of the Investment Board  
ICC Complex, New Baneshwor, Kathmandu, Nepal  
Tel: +977-1-4575277, 977-1-4575278 Fax: +977-1-4575281  
Email: info@ibn.gov.np Website: www.ibn.gov.np X(formerly Twitter) : @IBNOffice

## POKHARA INTERNATIONAL CONVENTION AND EXHIBITION CENTER



## Background

In recent years, Nepal has been experiencing a notable transformation in its tourism sector with the emerging growth of Meetings, Incentive, conventions, and Exhibition (MICE) tourism. Historically, MICE tourism remained an under tapped sector in the country. However, with its abundant natural beauty, congenial hospitality, and favorable year-round climate, Nepal is now recognized as an appealing destination for hosting various professional events, including conferences, workshops, and seminars.

Thus, the project serves as a strategic initiative to revitalize the tourism sector, particularly focusing on MICE tourism. The scope of the project is to construct a modern state of the art international convention and exhibition facility that is flexible and versatile enough to accommodate various types and sizes of conventions, conferences, exhibitions, trade shows, and meetings. The project entails the provision of supporting amenities and facilities which includes a 5-star luxury hotel, museum, picnic sports, children's park and other business and recreational facilities.

## Features



Convention Hall



Museum



Exhibition and Cultural Center



Vehicle Parking



5-star Hotel



Children's Park



Picnic Area



Amphitheatre



Food Courts and Restaurants

## Benefits



Employment Opportunities



Tourism Promotion and Development



Sustainable Development Goals and Green Growth



Tax Revenue



Economic Multiplier Effect

## Financial Indicators

Project cost including IDC	: NPR 4,151,015,512
Area	: Approx. 7.1 hectares
NPV	: NPR 312,831,891.88
Project IRR	: 12.22%
Equity IRR	: 14.05%
Project BCR	: 1.02
Equity BCR	: 1.26
Debt Equity Service Ratio (average)	: 1.26 times
Discounted Payback Period	: 19 years

## Implementation Modality



Public-Private-Partnership

**BOOT**

Build-Own-Operate-Transfer

**30 yrs**

inclusive of construction phase

## Implementation Timeline



## Outcomes

- The MICE Tourism will be streamlined adding to the tourism in Pokhara, and in Nepal.
- Boost the tourism sector and its potential in Pokhara post COVID
- Positively contribute towards utilization of Pokhara International Airport.



\*Data and information presented is based on Pre-Feasibility Study report prepared in 2023